

CABLE 413 RF: IPEX MHF PLUG + FRONT MOUNT N STRAIGHT BULKHEAD JACK WITH O-RING RATED TO IP67/68 + MULTIPLE CABLE SIZES

SPECIFICATIONS:

1. I-PEX MHF PLUG, P/N: FOR $\phi 1.32$ MM DS CABLE: 20278-112R-32.
FOR $\phi 1.37$ MM CABLE: 20351-112R-37. FOR RG178 CABLE: 20278-112R-38
2. COAXIAL CABLE, SEE P/N OPTIONS FOR DETAIL.
3. FRONT MOUNT N STRAIGHT BULKHEAD JACK WITH O-RING RATED TO IP67/68, P/N: RFCT-N009-F78.

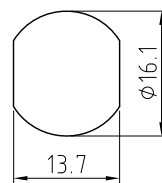
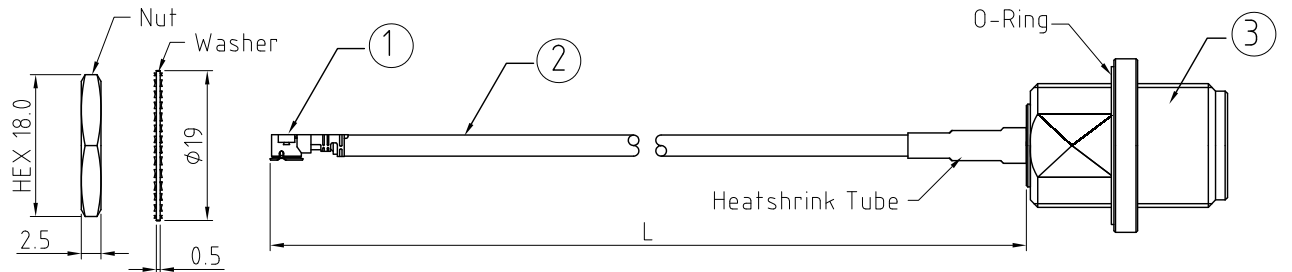
USAGE PRECAUTIONS: CABLES USING 'MICRO' COAX ARE DELICATE:
 (i) HANDLE WITH CARE.
 (ii) DO NOT TWIST; APPLY EXCESSIVE FORCES OR SHARP BENDS TO THE CABLE. DO NOT FORCEFULLY DEFORM WIRES.
 (iii) CONSULT CONNECTOR MANUFACTURER'S DATASHEETS FOR DETAILED NOTES ON HANDLING INSTRUCTIONS.

ENVIRONMENTAL:

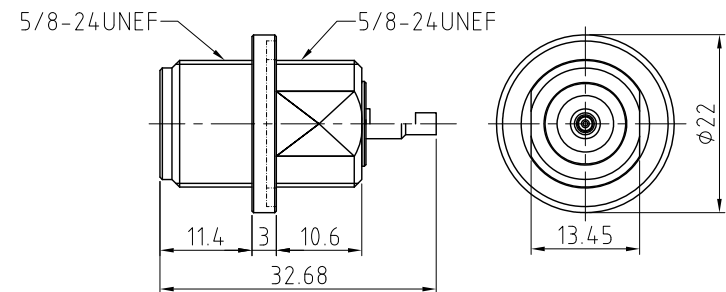
- A. BULKHEAD MOUNTED CONNECTOR (RFCT-N009-F78) RATED TO THE FOLLOWING SPECIFICATION:
- i. IP6X - DUST TIGHT - NO PARTICLE INGRESS.
 - ii. IPX7 WATERPROOF FOR 30 MINUTES UP TO 1 METER UNDERWATER.
 - iii. IPX8 WATERPROOF FOR 48 HOURS AT 1 METER UNDERWATER.

NOTES:

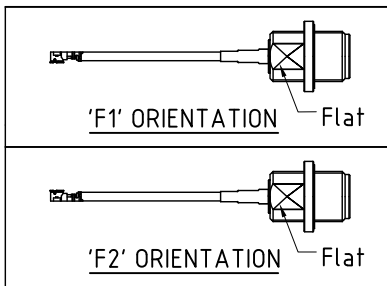
1. THE ORIENTATION OF CONNECTORS ON DRAWING IS FOR REFERENCE ONLY, IF THE ORDER IS LEFT BLANK THE CONNECTOR WILL NOT HAVE FIXED ORIENTATION.
2. FIXED ORIENTATION IS SUGGESTED FOR CABLE LENGTH 50MM TO 100MM. PLEASE SPECIFY THE FIXED ORIENTATIONS FROM THE ORDER CODE (F1, F2, ETC)
3. CONTACT GRADCONN IF THE ORIENTATION YOU REQUIRE IS NOT SHOWN.
4. WORKING FREQUENCY RANGE: DC-3GHz.
5. IMPEDANCE: 50 OHM.
6. OPERATING TEMPERATURE: -40°C TO +85°C.
7. IT IS INTENDED THAT MOUNTING OF THIS CONNECTOR IS ACHIEVED USING THE NUT AND WASHER PROVIDED. PLEASE CONTACT GRADCONN FOR ADVISE IF PLANNING TO USE A DIFFERENT METHOD OF MOUNTING.



RECOMMENDED N MOUNTING HOLE



N DETAIL DRAWING



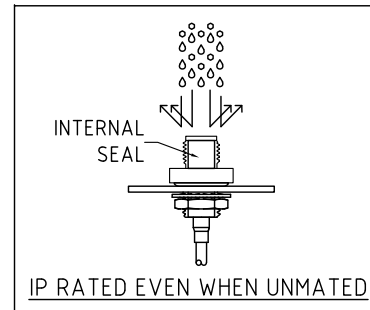
HOW TO ORDER
 CABLE 413 RF - X X X X - X X - X - X

"L" LENGTH IN MM
 eg: 100MM = 0100
 (MIN. = 0050, MAX. = 2000,
 STANDARD = 0100, 0150, 0200)
 Tolerance: 50-200mm: ± 5 mm.
 201-500mm: ± 7 mm.
 >500mm: ± 10 mm.

CABLE SIZE OPTIONS:
 BLANK = $\phi 1.32$ MM DS CABLE, COLOR: GRAY
 1 = $\phi 1.37$ MM CABLE, COLOR: BLACK
 2 = RG178 CABLE, COLOR: BROWN

WASHER AND NUT OPTIONS:
 BLANK = SEPARATELY PACKED (STANDARD)
 A = ASSEMBLED WITH CONNECTOR

ORIENTATION OPTIONS:
 BLANK = DOES NOT HAVE A FIXED ORIENTATION
 F1 = IPEX MHF CONNECTION DOWN (L=50-200MM)
 F2 = IPEX MHF CONNECTION UP (L=50-200MM)
 (SEE NOTES 1, 2, 3 AND DIAGRAMS FOR MORE INFORMATION)



REV. DATE & DRN
10. 06/07/20 - CC RELEASE
11. 16/06/23 - NYW
12. 16/07/23 - NYW
13. 16/07/23 - NYW
14. 16/07/23 - NYW
15. 26/07/23 - NYW
16. 26/07/23 - NYW
17. 31/03/24 - CC

ADD IP RATING VIEW
ADD NOTE 7.
ADD CABLE SIZE 2 OPTION.
ADD CABLE SIZE 1 OPTION.
ADD F2 ORIENTATION.
ADD F1 ORIENTATION.
ADD NOTE 7.
ADD IP RATING VIEW

Scale: NTS	THIRD ANGLE	Unstated: .X, .XX, .XXX	Tolerances: N/A, N/A, N/A
Drawn: CC		ANGLES	N/A
App'd: XXX	Title: CABLE ASSEMBLY	Unit: mm	
Date: 31 MAR. '24	Revision: 1.7		

NAUTILUS
 IP Rated RF Products

GRADCONN
 www.gradconn.com

Type: Cable 413 RF
CABLE 413 RF
Drawing Number:
Sheet 1 of 1
Drawing © E and O E